

# winmark

*Building a global CIO community  
at the heart of a C-Suite ecosystem*



# CIO UK Board

Chair



**Andrew Marks**  
Former Group CIO  
Grenadier Holdings

Panel



**Andrew Shannon**  
Head of AI and Cloud  
TP ICAP



**Dominic Redmond**  
Chief Information Officer  
Page Group



**Nina Tatsiy**  
Regional CIO  
BAT



**Usha Newland**  
Chief Information Officer  
Barclays UK



**Ashish Surti**  
Chief Digital & Information  
Officer  
Colt Technology Services

“  
**“Maintaining a strong  
network is a key component  
of success”**  
”



**Justin King CBE**  
Chair, OVO  
and former CEO  
Sainsbury's

# Some of Winmark's 900+ Members



*“Working with Winmark has greatly enhanced our in-house training and development programme.”*



**Rachel Jacobs**  
Group General  
Counsel and Diversity  
Equity & Inclusion  
Champion  
Springer Nature



# The Winmark CIO Network – At a Glance



The CIO Network is a protected space for CIOs and Information Directors to share challenges, ideas, successes and passions in a 'non-sales' environment to encourage open dialogue.



The CIO Network is based on a peer-to-peer model, in which members learn from each other, benchmark, gain assurance and tap into the 'wisdom of the crowd'.



Members gain practical insights through in-depth case studies and impromptu reflections; from nightmare 'war stories' as well as award-winning initiatives.



Members have access to resources, toolkits, and insights coming out of network activity which is captured and archived for on-demand reference.



CIO Network members get insights and expertise from Network technical partners to help them challenge their advisors effectively and help frame the scope of advisory work.

# Delivering Value on Every Level

## Organisation

### Insight

Into what the best CIOs and companies are doing and how they are doing it.

### Confidence

Ability to capitalize on proven CIO methods with supporting collateral.

### Access

Access to 900+ leading C-Suite Executives, filling knowledge and skills gaps, which you can tap into at any time.

## Role

### Strategic

Insight into what is possible and the spark and energy to make it happen.

### Decisions

Better and faster decisions made with greater confidence.

### C-Suite

Commercial and career benefits of access to the Winmark C-Suite networks and profiling.

### People

Better managed people, staying longer, engaged, performing better and delivering more value.

### Risk & Money

Reduced risks and consultancy costs, due to proven methods from peers.

## Team

### Time

Saved time in sourcing better policies, tools and methods. Right first time, freeing up time to add value.

### Unlimited

Unmetered usage that costs less than half a days consultancy.

### Develop

Free access to \$100,000+ of World Class Masterclasses.

# What does Winmark do for You?

## World Class C-Suite Community

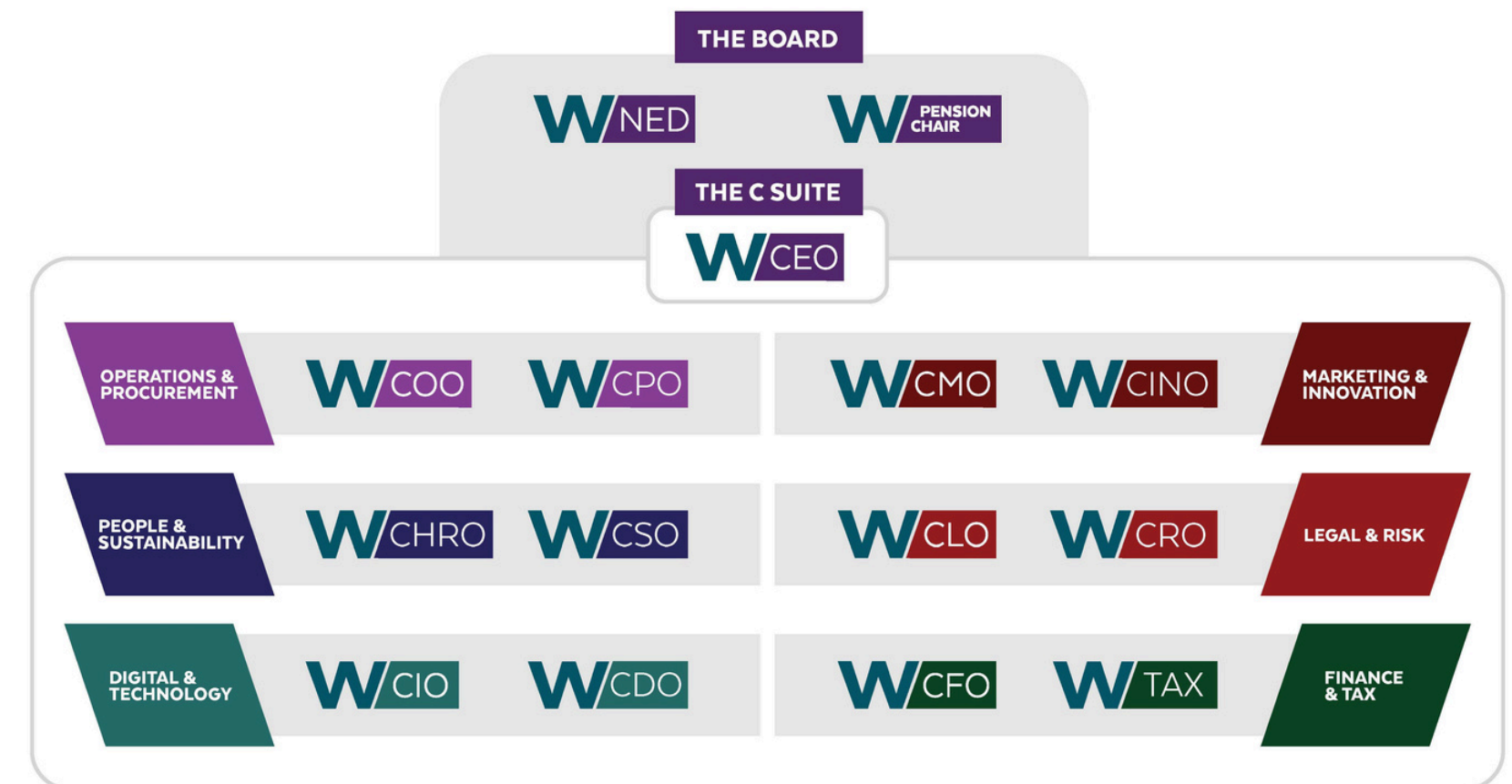
You get global access to 16+ C-Suite networks, including over 140+ C-Suite meetings annually, offering the ability to connect and source insights from over 900 member organisations globally.

## World Class Development of your Team

Academies & Masterclass programme to develop and empower your team, including access to our 'Fortune out of a Box' strategy, delivering all the tools you need to run a world class business unit.

## VIP Service & Career Support

Winmark helps members throughout their career (including between roles), through one-to-one support, access to our unique NED mentor pool, pop-up boards and profile raising.



One of our members described Winmark as follows...

***“Winmark is an executive education company specialising in C-Suite development, networking and thought leadership. A Corporate Membership includes access to all networks and Winmark Academies.”***

# 2024 CIO Meetings



**Winmark Innovation Summit and Awards**



**Digital Board Series: The Future of Cyber Defence**



**Reputation, Trade and Sanctions**



**The Changing Role of the Middle Manager**



**EY on Connected B2B Data**



**The AI Paradox - Why the Personal Touch is Still Key**



**Integrating Business Units**



**Valuation Office Agency - A Transformation Case Study**



**EBITDA Growth Through Transformational Change**



**Collective Intelligent - Building a Business That's Smarter than You**

# Masterclasses & Certificates

## Masterclasses and Certificates



Blockchain & Metaverse  
Cyber Leadership  
Data Leadership  
AI & Machine Learning



Presence & Communications  
Team & Change Leadership  
Negotiating & Influencing Skills  
Project Management

### Careers and Succession



One Day MBA  
Climate & Sustainability  
Finance for Business Leaders  
Governance & Leadership



C-Suite Certificate



Aspire: The C-Suite Next  
Gen Programme



NED Mentoring

### Unlimited

The current portfolio offers over 90 hours / CPD points (2-3 weeks) to every member a year and there are no restrictions on member usage.

### Free for Members

Membership includes all masterclasses which can be used to develop yourself and your team. The masterclasses alone are worth the membership.

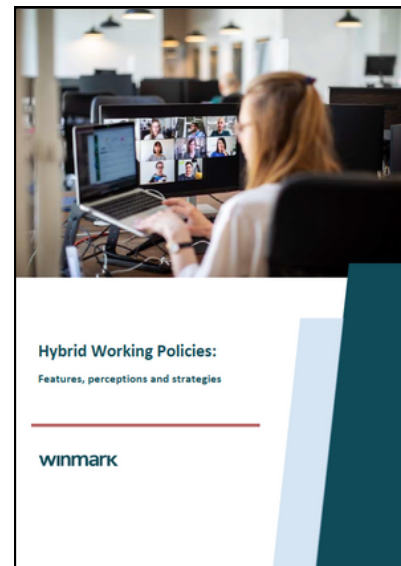
### Real & Applicable

Masterclasses are World Class and kept relevant and up to date with a faculty of practitioners and the links to Foob strategy.

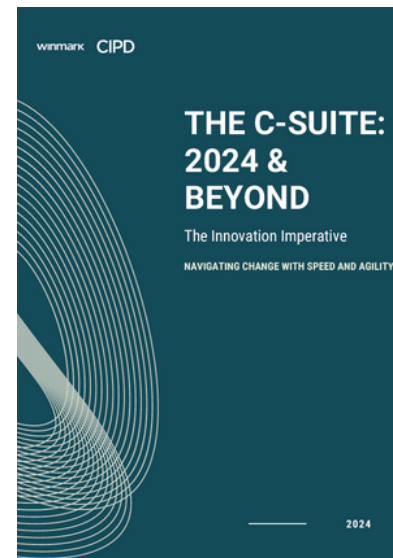


# CIO Know-How

## Must Reads



Hybrid Working Polices Report



The C-Suite: 2024 & Beyond



2024 Department Finance Benchmark



Top Insights for CIOs

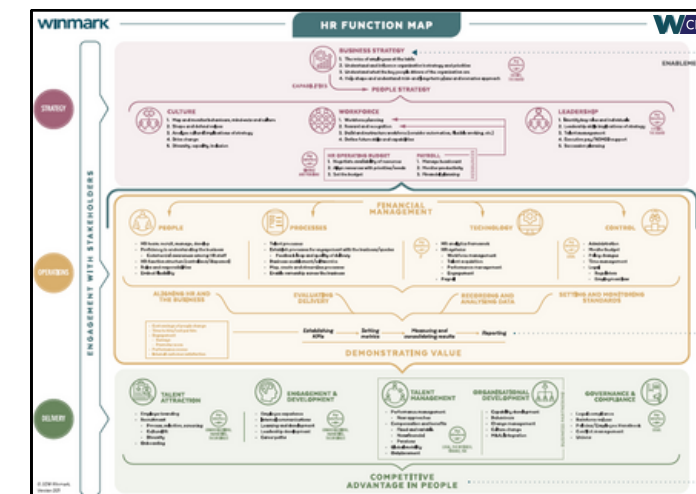
## Welcome pack



How to become a Non-Executive Director



Tips for coping with the rising cost of living



IT Function Map

# Members in Action



# Member Offering Summarised

Account Management Dedicated to Your Success		
<b>Regular Account Catch Ups</b> Addressing your issues in person and finding you solutions. The new member pack alone is worth joining for.	<b>Crowdsourcing of Solutions</b> Ability to source proven solutions anonymously from the best of your peers and beyond.	<b>Bespoke Programme for your Department</b> Best of peers sharing know-how with you face-to-face and virtually.
A World Class Open Community		
<b>Global C-Suite Access</b> Access to 14+ C-Suite networks, 160+ events across over 20 global cities.	<b>World's Best Insights</b> Insights from the World's top consultancies and business schools at your fingertips.	<b>Digital Community</b> The member area makes everything easy, from booking masterclasses to sourcing know-how.
Fortune Development of Your Team		
<b>Masterclasses &amp; Certificates</b> Intensive deep dives including over 12 masterclasses covering business, people and tech.	<b>Aspire: The C-Suite Next Gen Programme</b> This is a three year programme, included in the membership.	<b>Foob [Fortune out of a Box]</b> The Foob content strategy is focused on delivering all the tools and collateral you need to run a World Class business unit.
Personal VIP Support		
<b>Pop Up Boards</b> Pop-up Boards are a safe space that consist of a group of experienced NEDs that form to address a certain issue for you.	<b>In Transition Members &amp; NED Mentoring</b> Whatever your employee status the team will look after you. You can also access a unique NED mentor pool.	<b>Career Support &amp; Profile Building</b> To boost your career we offer, one on one support, profiling online and at events to support personal ambitions.

*"The quality of communications and personal interventions are the best I have ever seen."*  
Board Chair & NED

*"I regularly share these insights with the rest of our leadership team."*  
Group Director, EasyJet

*"The best course I have ever attended. The level of thought is excellent."*  
Director, Aviva

*"Very impressed that you do this. Thank you."*  
CXO, NBCUniversal

# Creating Value

“

*“When I have a problem I use the network rather than a consultancy”*

**Smith's**

”

“

*“The report has probably saved us £60,000 in consultancy fees”*

  
**vodafone**

”

“

*“We found our membership to be extremely useful, valuable insights and a fun group”*

**AIG**

”

# Your C-Suite Membership

Options	Who is included	One Year	Two Years	Three Years
C-Suite	You and your entire Executive Committee	£ 25,000	£ 47,500	£ 70,000
Department	You and your entire Department	£ 8,000	£ 15,200	£ 22,400
Personal	You	£ 3,500	£ 6,650	£ 9,800
<b>Know-How &amp; Executive Development</b>	<b>Free &amp; Included</b> <ul style="list-style-type: none"> <li>○ Pop-Up Boards</li> <li>○ All Events &amp; Open Masterclasses</li> <li>○ Winmark Reports, Tools &amp; Templates</li> </ul>	<b>Available from £4,500</b> <ul style="list-style-type: none"> <li>○ NED and Board mentoring</li> <li>○ In-house Masterclass opportunities</li> <li>○ Thought Leadership, Research, Benchmarking</li> </ul>		

All prices where applicable are subject to VAT. Options shared are confidential and may not be disclosed to any other party. Please ask for more details about these and other Membership options.

# FAQs

## Profile & Career

Can Winmark help me build my profile?

Yes, Winmark can help you build your profile within the network and as a business leader. This usually involves a review of your current positioning and then growing your profile in a targeted way aligned to your career.

## Meetings

Can I attend other network meetings?

Yes, we encourage our members to learn from members outside their network, so you are welcome to register for meetings that are organised for other networks. Network members are always given priority.

## Team Value

How can I ensure the team get value straight away?

Membership often pays for its self in the first 48 hours. This is because of a rigorous and inclusive onboarding process. This includes a member induction pack, account names, what's coming up soon, and a walk through-session to ensure early traction and a smooth start.

## Global Team

How can my global team access the benefits?

Two thirds of our events and training are online and each is recorded so your team can catch up at anytime. There is also a Member portal where they can access know-how 24/7. We run in-person meetings in many cities and if you would like more meetings in a city near you please do ask.

## CPD

Can I earn CPD points by attending Winmark events?

Yes, every hour spent with Winmark is one CPD point. Winmark can provide recognised summary CPD certificates for you and members of your team. It is a great way to ensure our team stays current and trained.

## Budget

I want to join but don't have budget, what can I do?

Our standard practice is to invoice at the start of the membership year. If this doesn't work for you, we can come up with a payment plan for you to split and delay payments where possible.

# Next Steps - Your VIP Member Roadmap



## Confirm you would like to join Winmark

- Let us know if you need help with internal sign-off
- Secure the onboarding call in your diary early.

Tick once done



## Access your 'Welcome Pack' and diary 'What's Coming Up'

- Logon to the membership area
- Download the App
- Sign up to events
- Highlight any immediate priorities



## Onboarding Call and Team Access

- Identify key challenges, opportunities and priorities.
- Decide on who you would like included (no limits within your membership)
- Discuss a Team Briefing call



## Embedding Your Membership

- Trigger introductions, consult the memberships, profiling, mentoring, pop-up boards, research and other platform opportunities
- Align events and masterclasses to team development needs.
- Look at 'Aspire Programme' and the internal Academy opportunity.

**EMAIL: HELLO@WINMARKGLOBAL.COM**

**CALL +44 (0) 207 605 8000**

**LINKEDIN: WINMARK**

**WINMARKGLOBAL.COM**

**WINMARK LTD  
7 Berghem Mews  
Blythe Road  
London  
W14 0HN  
United Kingdom**



## Your Winmark Team Contacts



Member, Partner & Research Enquiries

**John Jeffcock**

**Chief Executive Officer**

[john.jeffcock@winmarkglobal.com](mailto:john.jeffcock@winmarkglobal.com)



Account, Programme & Profiling Enquiries

**Ross Webster**

**C-Suite Executive**

[ross.webster@winmarkglobal.com](mailto:ross.webster@winmarkglobal.com)



Masterclass, Academies & Aspire Enquiries

**Paula Archbold**

**HR & Academies Executive**

[paula.archbold@winmarkglobal.com](mailto:paula.archbold@winmarkglobal.com)



Content & Consult the Membership Enquiries

**Jingyuan Wang**

**Knowledge Executive**

[jingyuan.wang@winmarkglobal.com](mailto:jingyuan.wang@winmarkglobal.com)



NED Mentoring & Pop-Up Board Enquiries

**Ross Webster**

**C-Suite Executive**

[ross.webster@winmarkglobal.com](mailto:ross.webster@winmarkglobal.com)