

winmark

*Building a global Affordable
Housing (AHN) community
at the heart of a C-Suite ecosystem*



AHN UK Board

Chair



Elizabeth Froude
Group Chief Executive
Platform Housing Group

Panel



Alan Keers
Chief Executive Officer
Red Kite Housing



Elspeth Mackenzie
CEO
Thrive Homes Ltd



Sarah Bissell
Group HR Director
Hyde Housing



Prof. Paddy Gray
Chair
Wheatley Group



Matthew Bailes
CEO
Paradigm Housing
Group



Sue Shirt
Chief Customer
Officer
Stonewater



Gloria Yang
Executive
Director Finance
Moat Homes Ltd



Andrea Baker
Director of Housing
& Corporate
Services
Poplar HARCA



Rose Bean
Director of Assets
and Sustainability
Abri



Troy Henshall
Chief Executive
Amber Housing

“We find it invaluable to engage with others across the housing industry, and also learn about wider topics relevant to running the business. We've also made use of offers such as the One Day MBA which is a really helpful tool for colleagues. Everyone who attends sessions finds them interesting and stimulating, and we intend to support the network going forward”



Elspeth Mackenzie
CEO
Thrive Homes Ltd

Some of Winmark's 900+ Members

“

“Winmark Affordable Housing Network and all its C-Suite networks are my absolute go to places to seek ideas, best practices and insights! The quality of the discussions and the range of topics are just fantastic.”



Gloria Yang
Executive Director of Finance
Moat Homes

“

“As an established NED and Chair, Winmark has enhanced my connectivity, developed my knowledge and helped me to fulfil my personal objectives. Truly inspirational.”



Paddy Gray OBE
Professor Emeritus of Housing
Ulster University



The Winmark AHN Network – At a Glance



The AHN Network is a protected space for Affordable housing leaders to share challenges, ideas, successes and passions in a 'non-sales' environment to encourage open dialogue.



The AHN Network is based on a peer-to-peer model, in which members learn from each other, benchmark, gain assurance and tap into the 'wisdom of the crowd'.



Members gain practical insights through in-depth case studies and impromptu reflections; from nightmare 'war stories' as well as award-winning initiatives.



Members have access to resources, toolkits, and insights coming out of network activity which is captured and archived for on-demand reference.



AHN members get insights and expertise from Network technical partners to help them challenge their advisors effectively and help frame the scope of advisory work.

Delivering Value on Every Level

Organisation

Insight

Into what the best housing organisations are doing and how they are doing it.

Confidence

Ability to capitalize on proven housing methods with supporting collateral.

Access

Access to 900+ leading C-Suite Executives, filling knowledge and skills gaps, which you can tap into at any time.

Role

Strategic

Insight into what is possible and the spark and energy to make it happen.

Decisions

Better and faster decisions made with greater confidence.

C-Suite

Commercial and career benefits of access to the Winmark C-Suite networks and profiling.

People

Better managed people, staying longer, engaged, performing better and delivering more value.

Risk & Money

Reduced risks and consultancy costs, due to proven methods from peers.

Team

Time

Saved time in sourcing better policies, tools and methods. Right first time, freeing up time to add value.

Unlimited

Unmetered usage that costs less than half a days consultancy.

Develop

Free access to \$100,000+ of World Class Masterclasses.

What does Winmark do for You?

World Class C-Suite Community

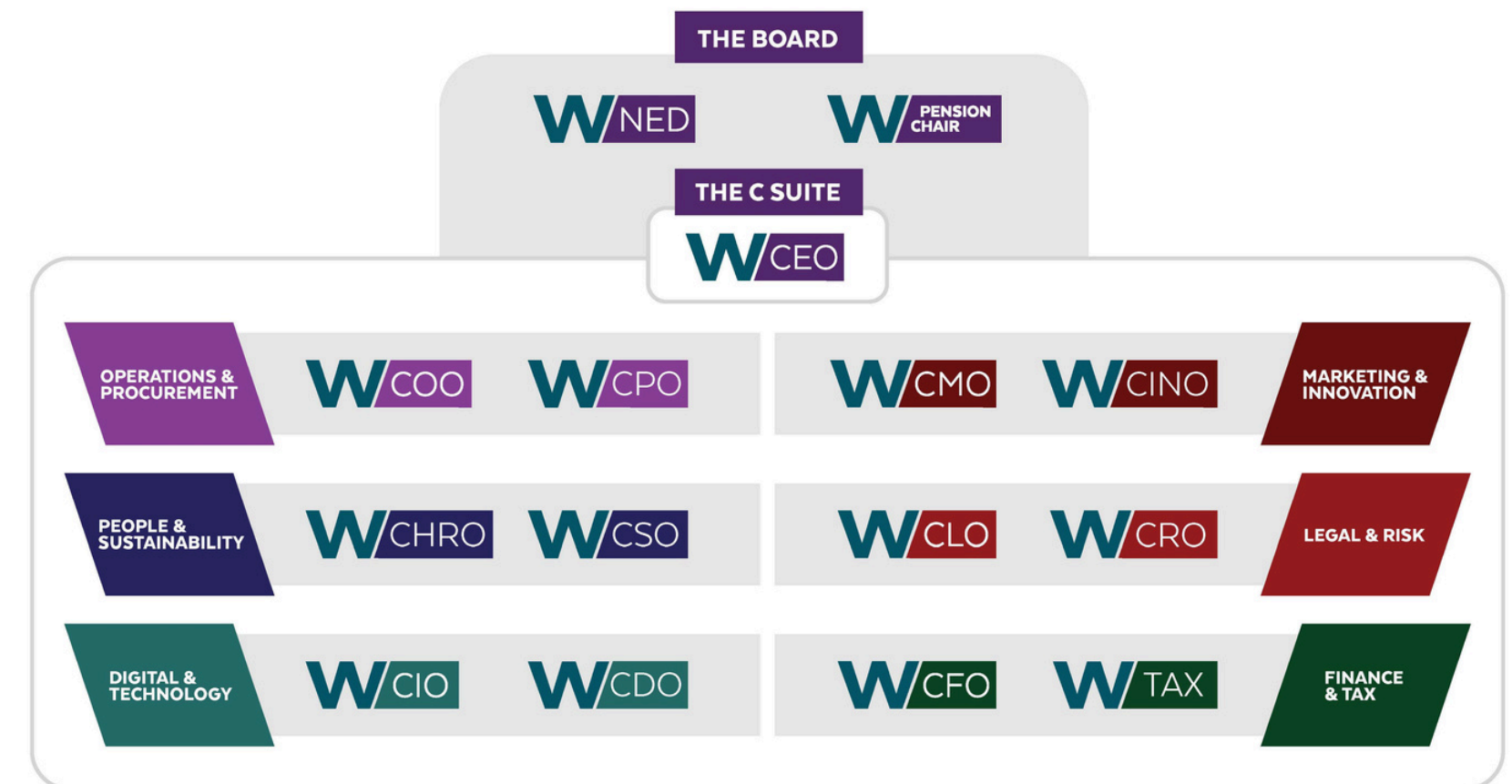
You get global access to 16+ C-Suite networks, including over 140+ C-Suite meetings annually, offering the ability to connect and source insights from over 900 member organisations globally.

World Class Development of your Team

Academies & Masterclass programme to develop and empower your team, including access to our 'Fortune out of a Box' strategy, delivering all the tools you need to run a world class business unit.

VIP Service & Career Support

Winmark helps members throughout their career (including between roles), through one-to-one support, access to our unique NED mentor pool, pop-up boards and profile raising.



One of our members described Winmark as follows...

“Winmark is an executive education company specialising in C-Suite development, networking and thought leadership. A Corporate Membership includes access to all networks and Winmark Academies.”

2024 AHN Meetings



Winmark Innovation Summit and Awards



The EPIC Conversation: Professionalisation of the Sector



Talent Attraction Strategies for 2024



Mastering the Customer Experience Puzzle: What Will It Cost?



Preparing for Housing Inspections: Learning from the Pilots



Winmark Summer Drinks - Outlook for the New Government



Motivating Your Employees to be Productive in Challenging Times



Public & Private Sector Summit



Members Lunch with the Housing Minister



Property Development Due Diligence



Crisis Management: Best Practice and Taking Back Control of the Narrative



A Date with the Regulator of the Social Housing - Global Accounts Report and the New Consumer Regulation Regime

Masterclasses & Certificates

Masterclasses and Certificates



Blockchain & Metaverse
Cyber Leadership
Data Leadership
AI & Machine Learning



Presence & Communications
Team & Change Leadership
Negotiating & Influencing Skills
Project Management

Careers and Succession



One Day MBA
Climate & Sustainability
Finance for Business Leaders
Governance & Leadership



C-Suite Certificate



Aspire: The C-Suite Next
Gen Programme



NED Mentoring

Unlimited

The current portfolio offers over 90 hours / CPD points (2-3 weeks) to every member a year and there are no restrictions on member usage.

Free for Members

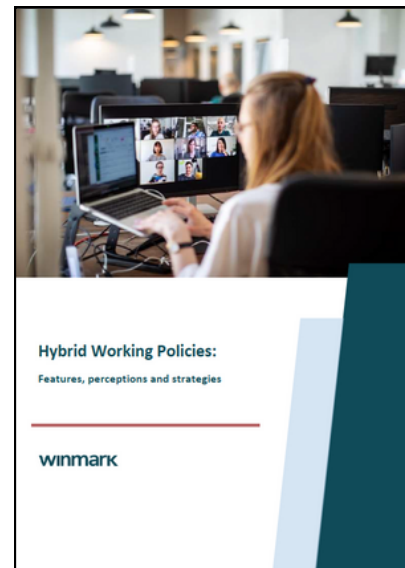
Membership includes all masterclasses which can be used to develop yourself and your team. The masterclasses alone are worth the membership.

Real & Applicable

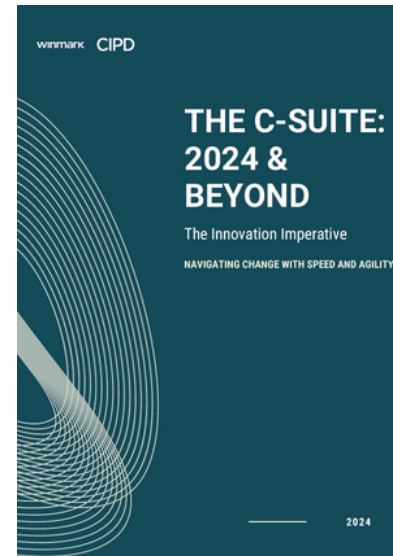
Masterclasses are World Class and kept relevant and up to date with a faculty of practitioners and the links to Foob strategy.

Know-How for Affordable Housing Leaders

Must Reads



Hybrid Working Policies Report



The C-Suite: 2024 & Beyond



2024 Department Finance Benchmark

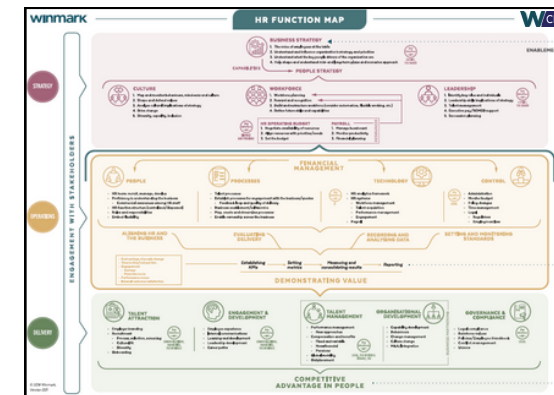


How to become a Non-Executive Director

Welcome pack



Housing Sector Induction Pack



CEO Function Map



Tips for coping with the rising cost of living

Members in Action



Member Offering Summarised

Account Management Dedicated to Your Success		
Regular Account Catch Ups	Crowdsourcing of Solutions	Bespoke Programme for your Department
Addressing your issues in person and finding you solutions. The new member pack alone is worth joining for.	Ability to source proven solutions anonymously from the best of your peers and beyond.	Best of peers sharing know-how with you face-to-face and virtually.
A World Class Open Community		
Global C-Suite Access	World's Best Insights	Digital Community
Access to 14+ C-Suite networks, 160+ events across over 20 global cities.	Insights from the World's top consultancies and business schools at your fingertips.	The member area makes everything easy, from booking masterclasses to sourcing know-how.
Fortune Development of Your Team		
Masterclasses & Certificates	Aspire: The C-Suite Next Gen Programme	Foob [Fortune out of a Box]
Intensive deep dives including over 12 masterclasses covering business, people and tech.	This is a three year programme, included in the membership.	The Foob content strategy is focused on delivering all the tools and collateral you need to run a World Class business unit.
Personal VIP Support		
Pop Up Boards	In Transition Members & NED Mentoring	Career Support & Profile Building
Pop-up Boards are a safe space that consist of a group of experienced NEDs that form to address a certain issue for you.	Whatever your employee status the team will look after you. You can also access a unique NED mentor pool.	To boost your career we offer, one on one support, profiling online and at events to support personal ambitions.



"The quality of communications and personal interventions are the best I have ever seen."

Board Chair & NED



"Winmark provide understanding and insight of our sector's knowledge and drivers with a clear window into the broader landscape, making connections that widen my horizons - both for the benefit of my organisation but also that help me develop personally."

Director of Corporate Assurance and Governance, Habinteg



"I can absolutely advocate for the value of these sessions and am looking forward to taking part in more."

DL&D, Eastlight Community Hom



"Very impressed that you do this. Thank you."

CXO, NBCUniversal

Creating Value

“

“When I have a problem I use the network rather than a consultancy”

Smith's

”

“

“The report has probably saved us £60,000 in consultancy fees”


vodafone

”

“

“We found our membership to be extremely useful, valuable insights and a fun group”

AIG

”

Your Membership

Options	Who is included	One Year	Two Years	Three Years
C-Suite and Department	You and your entire Executive Committee	£ 7,000	£ 13,000	£ 18,000
Personal	You	£ 3,500	£ 6,650	£ 9,800
Know-How & Executive Development	Free & Included <ul style="list-style-type: none"> ○ Pop-Up Boards ○ All Events & Open Masterclasses ○ Winmark Reports, Tools & Templates 	Available from £4,500 <ul style="list-style-type: none"> ○ NED and Board mentoring ○ In-house Masterclass opportunities ○ Thought Leadership, Research, Benchmarking 		

FAQs

Profile & Career

Can Winmark help me build my profile?

Yes, Winmark can help you build your profile within the network and as a business leader. This usually involves a review of your current positioning and then growing your profile in a targeted way aligned to your career.

Meetings

Can I attend other network meetings?

Yes, we encourage our members to learn from members outside their network, so you are welcome to register for meetings that are organised for other networks. Network members are always given priority.

Team Value

How can I ensure the team get value straight away?

Membership often pays for its self in the first 48 hours. This is because of a rigorous and inclusive onboarding process. This includes a member induction pack, account names, what's coming up soon, and a walk through-session to ensure early traction and a smooth start.

Global Team

How can my global team access the benefits?

Two thirds of our events and training are online and each is recorded so your team can catch up at anytime. There is also a Member portal where they can access know-how 24/7. We run in-person meetings in many cities and if you would like more meetings in a city near you please do ask.

CPD

Can I earn CPD points by attending Winmark events?

Yes, every hour spent with Winmark is one CPD point. Winmark can provide recognised summary CPD certificates for you and members of your team. It is a great way to ensure our team stays current and trained.

Budget

I want to join but don't have budget, what can I do?

Our standard practice is to invoice at the start of the membership year. If this doesn't work for you, we can come up with a payment plan for you to split and delay payments where possible.

Next Steps - Your VIP Member Roadmap



Confirm you would like to join Winmark

- Let us know if you need help with internal sign-off
- Secure the onboarding call in your diary early.

Tick once done



Access your 'Welcome Pack' and diary 'What's Coming Up'

- Logon to the membership area
- Download the App
- Sign up to events
- Highlight any immediate priorities



Onboarding Call and Team Access

- Identify key challenges, opportunities and priorities.
- Decide on who you would like included (no limits within your membership)
- Discuss a Team Briefing call



Embedding Your Membership

- Trigger introductions, consult the memberships, profiling, mentoring, pop-up boards, research and other platform opportunities
- Align events and masterclasses to team development needs.
- Look at 'Aspire Programme' and the internal Academy opportunity.

EMAIL: HELLO@WINMARKGLOBAL.COM

CALL +44 (0) 207 605 8000

LINKEDIN: WINMARK

WINMARKGLOBAL.COM

WINMARK LTD
7 Berghem Mews
Blythe Road
London
W14 0HN
United Kingdom



Your Winmark Team Contacts



Member, Partner & Research Enquiries

Natalie Hogg

C-Suite Director

natalie.hogg@winmarkglobal.com



Account, Programme & Profiling Enquiries

Iulia Heghes

Senior C-Suite Manager

iulia.heghes@winmarkglobal.com



Masterclass, Academies & Aspire Enquiries

Paula Archbold

HR & Academies Executive

paula.archbold@winmarkglobal.com



Content & Consult the Membership Enquiries

Jingyuan Wang

Knowledge Executive

jingyuan.wang@winmarkglobal.com



NED Mentoring & Pop-Up Board Enquiries

Ross Webster

C-Suite Executive

ross.webster@winmarkglobal.com